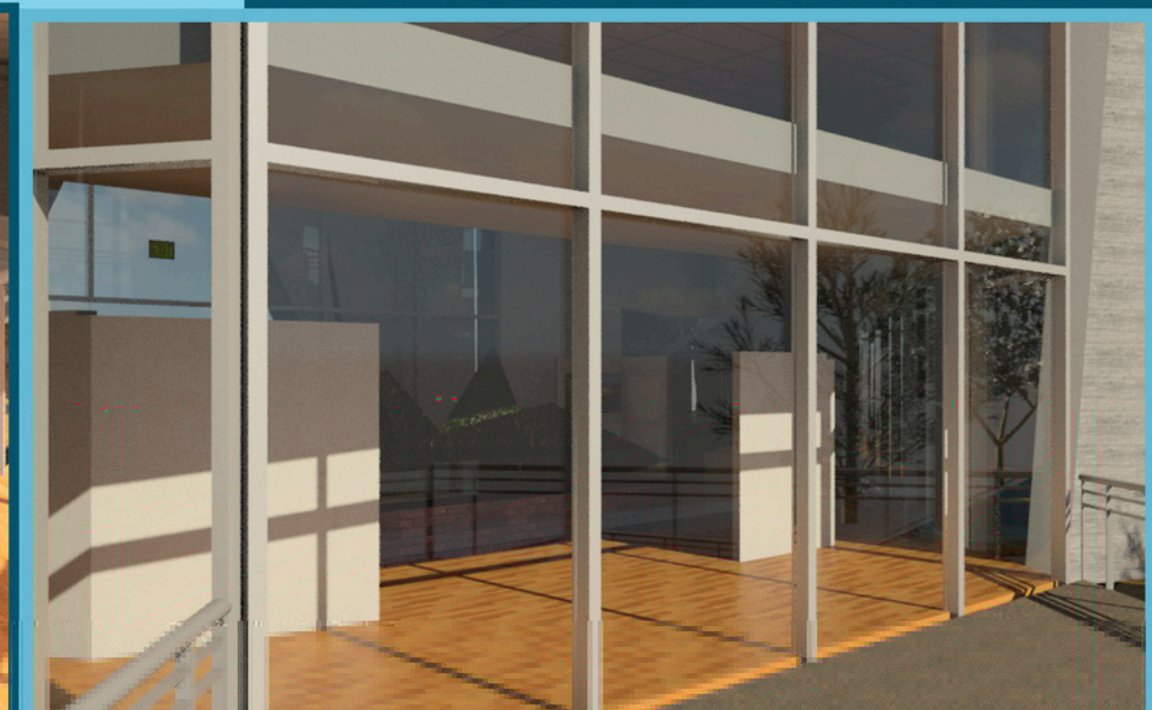
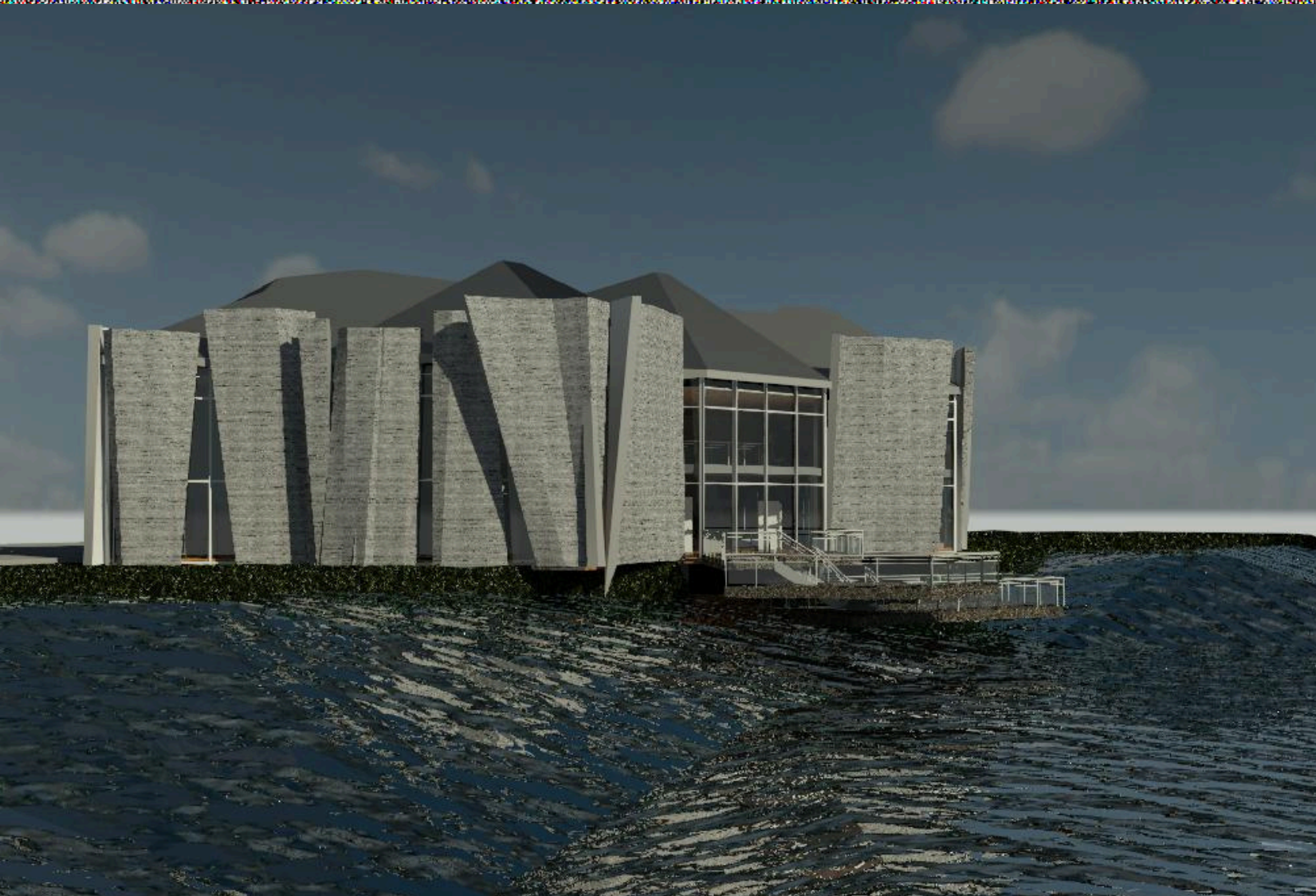
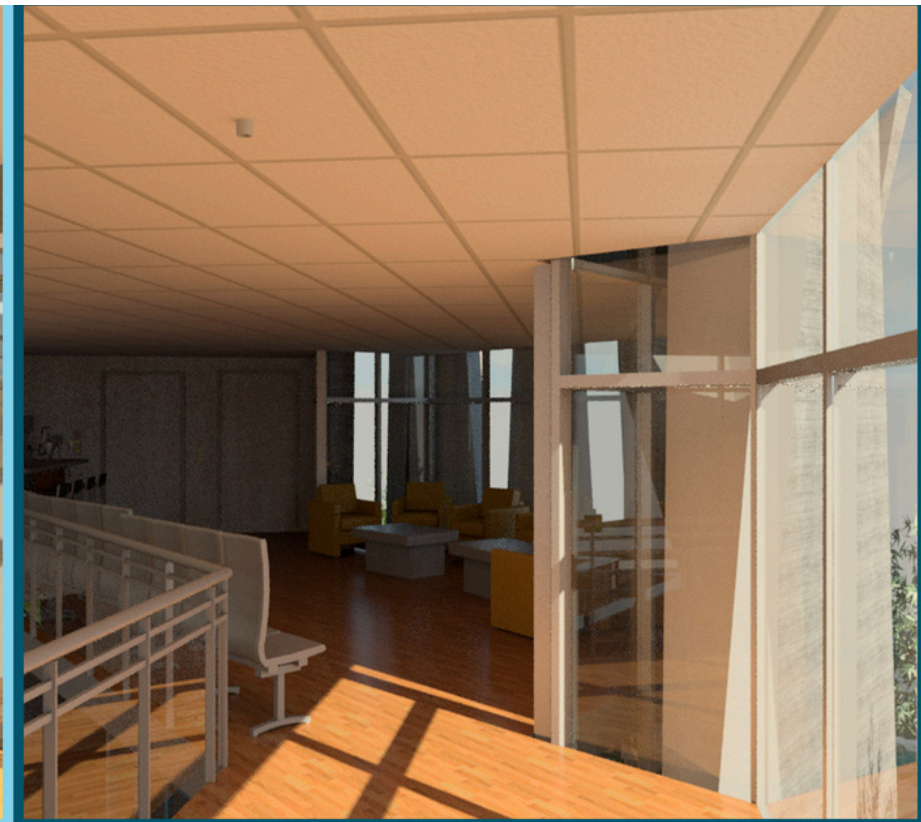
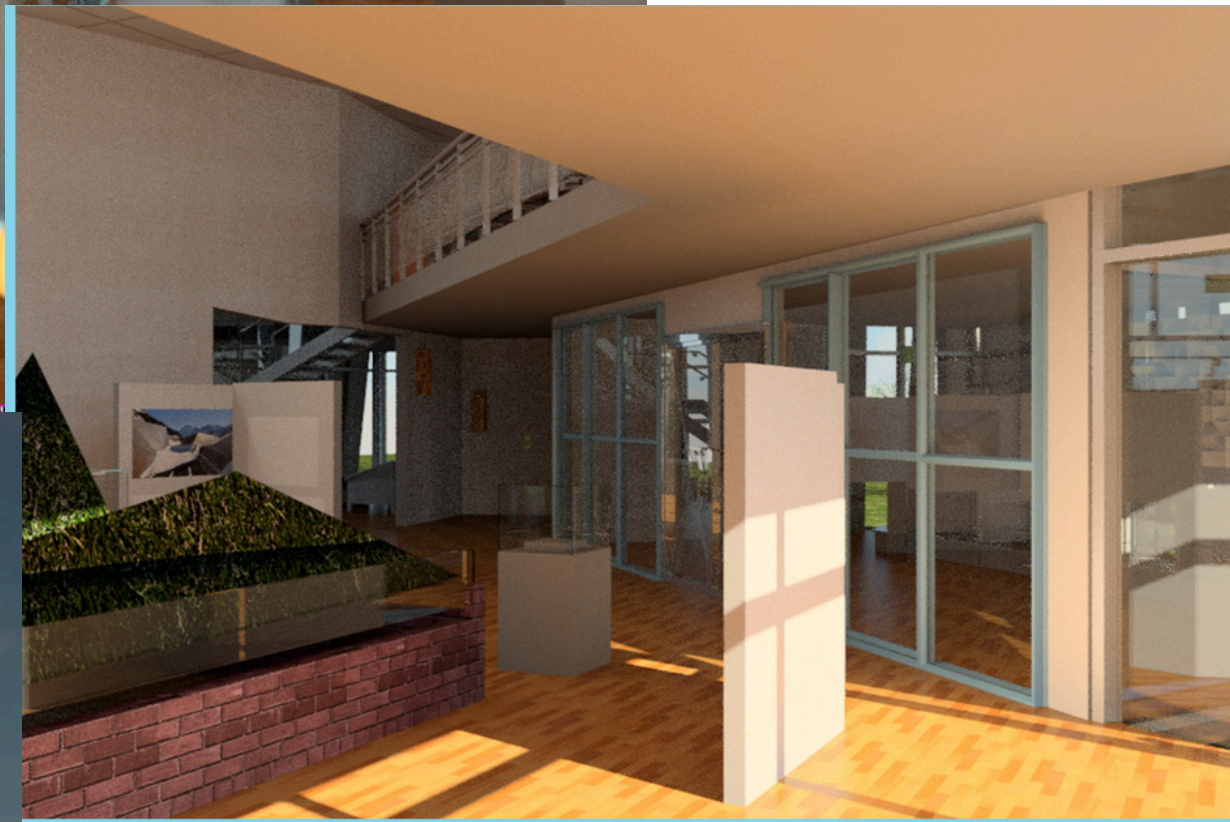
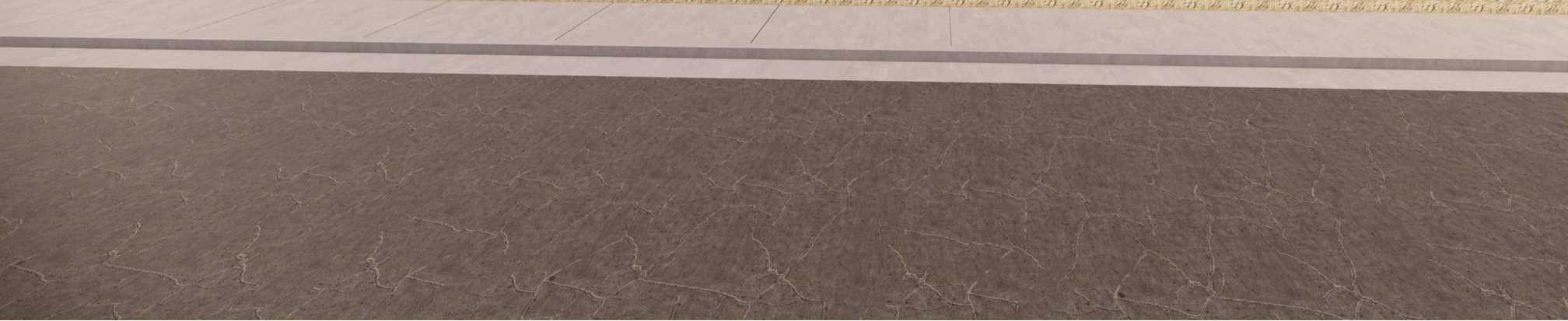


FALL 2015

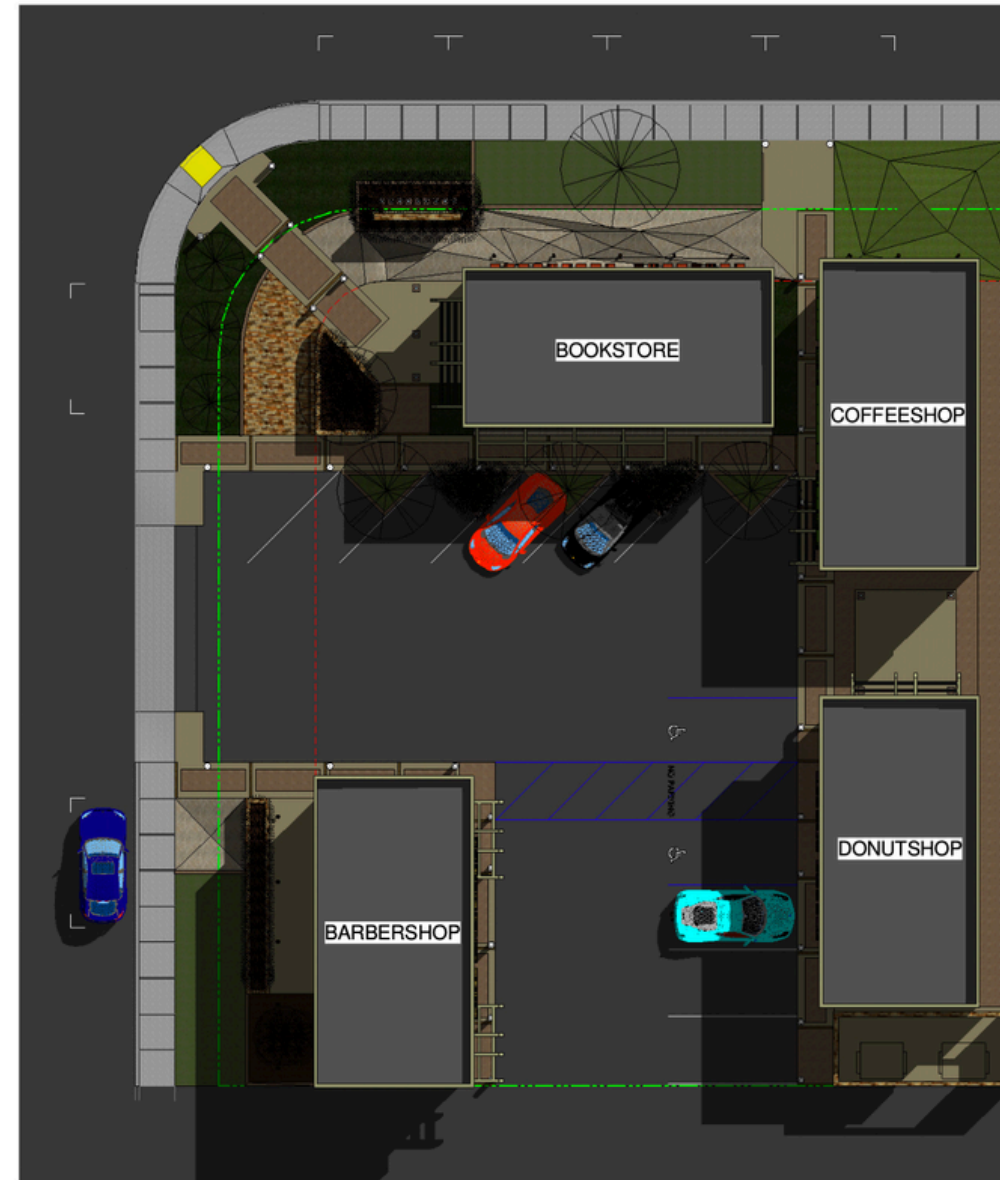
THE PROJECT WAS DEVELOPED AS A PART OF REPRESENTING THE PARK WHICH WAS GLACIER NATIONAL PARK LOCATED IN MONTANA . SINCE THE MAIN PARKS GLACIERS ARE CURRENTLY MELTING I REPRESENTED A BUILDING WITH GLACIER LIKE STUCTURE IN WHICH THE BUILDING COULD REPRESENT THE MELTED GLACIERS THAT ONCE WAS THERE.







OLIVE STUCCO
  STONE VENEER
  GREEN WALL



**SITE ANALYSIS**

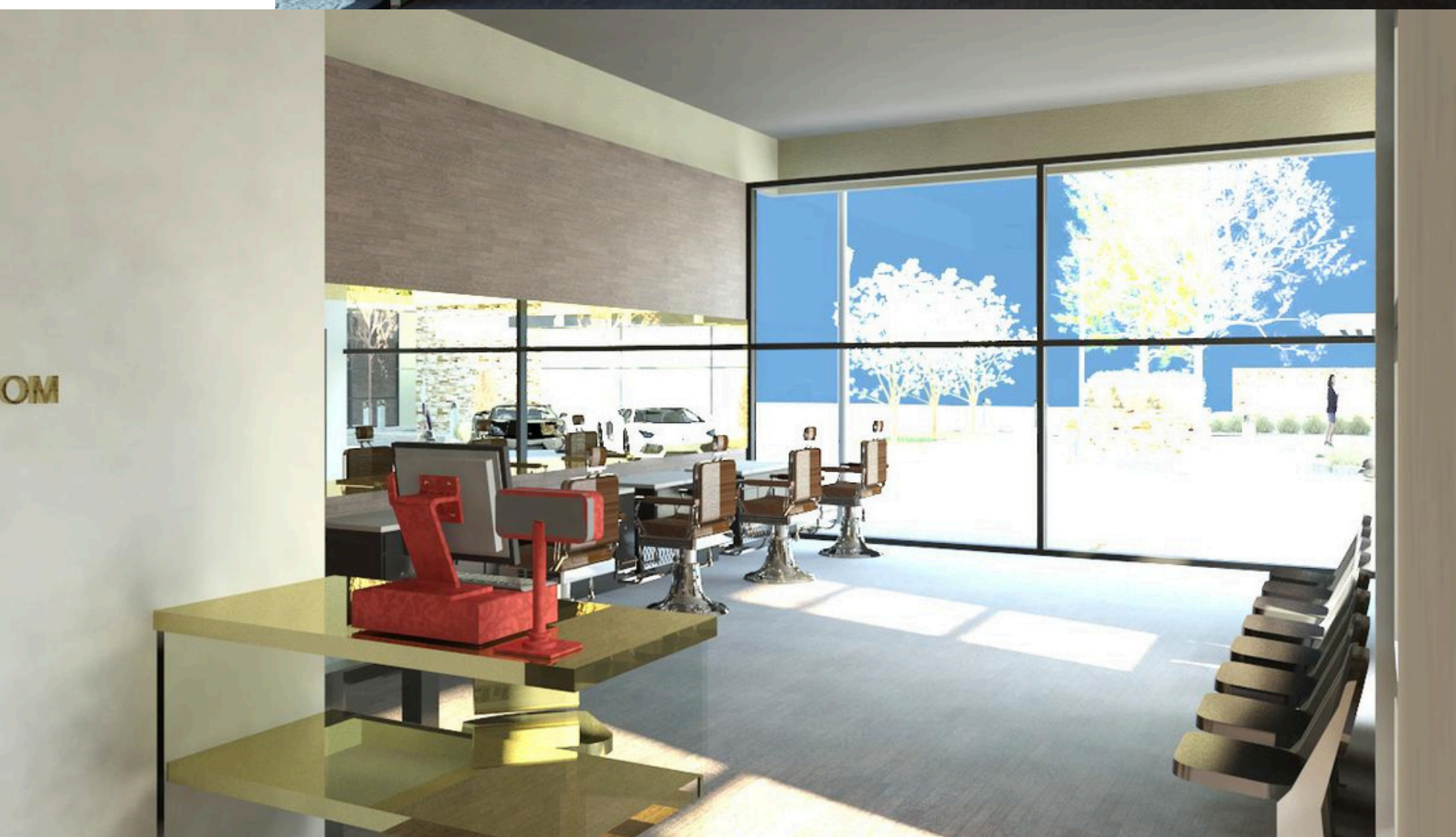
-4 UNITS @ 800 SQ. FT.

-16 PARKING: 1 VAN ACCESSIBLE, 1 ACCESSIBLE, & 1 CLEAN AIR/ VAN POOL/EV.

-ADEQUATE SHORT TERM BICYCLE PARKING WITHIN 200 SQ. FT. OF ALL BLDGS.

-GREEN WALLS LOCATED ON BARBERSHOP W. WALL & COFFEESHOP N. WALL.







24th Street (82.5')

10 ft setback

10 FT SETBACK

C Street (82.5')

10 ft setback

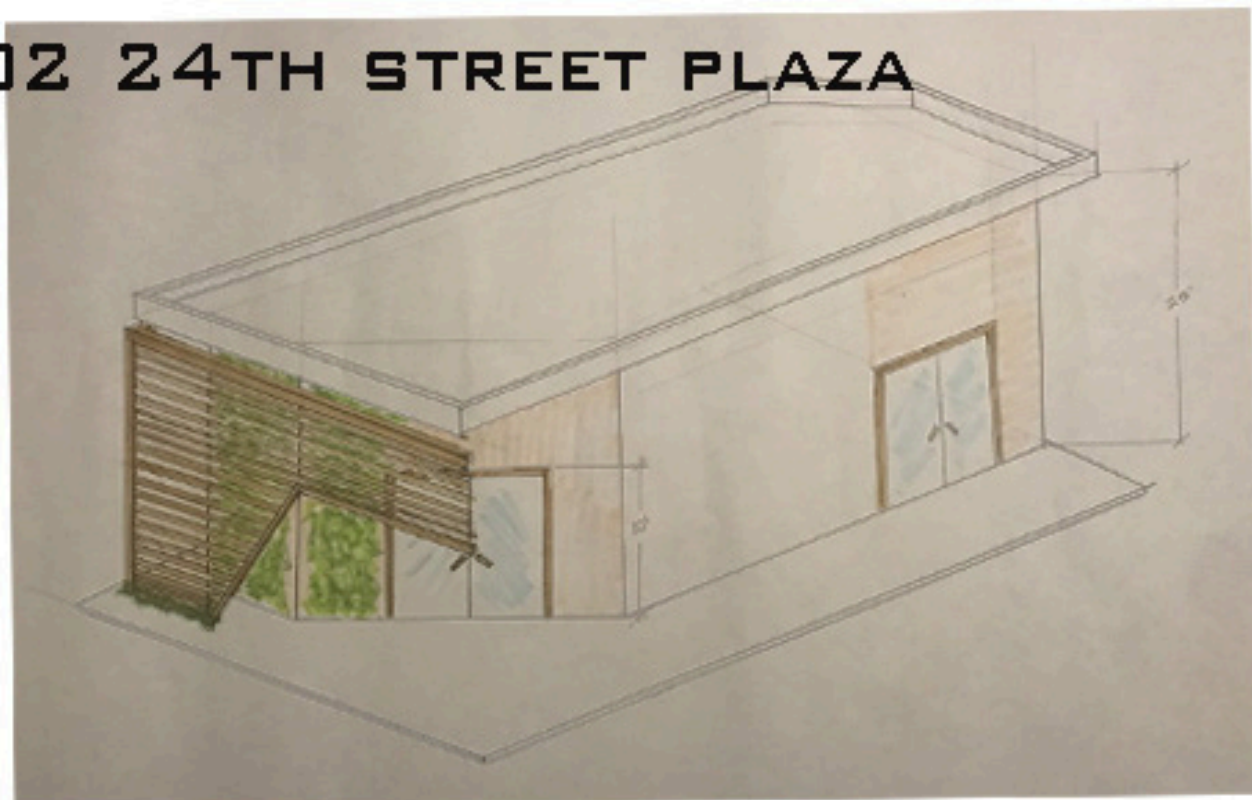
122'0"

107' 107.0"

20 ft alley

M/S S

# 02 24TH STREET PLAZA



## 24 STREET PLAZA

YEAR FALL 2016

THE SPECIAL ELEMENT USED TO ORGANIZE THE PLAZA IS SQUARES. IT REPRESENTS A SEPARATED SQUARE SPACE. THE ELEMENTS HAVE THE SAME SHAPE.

