

PORTFOLIO

Versión 01

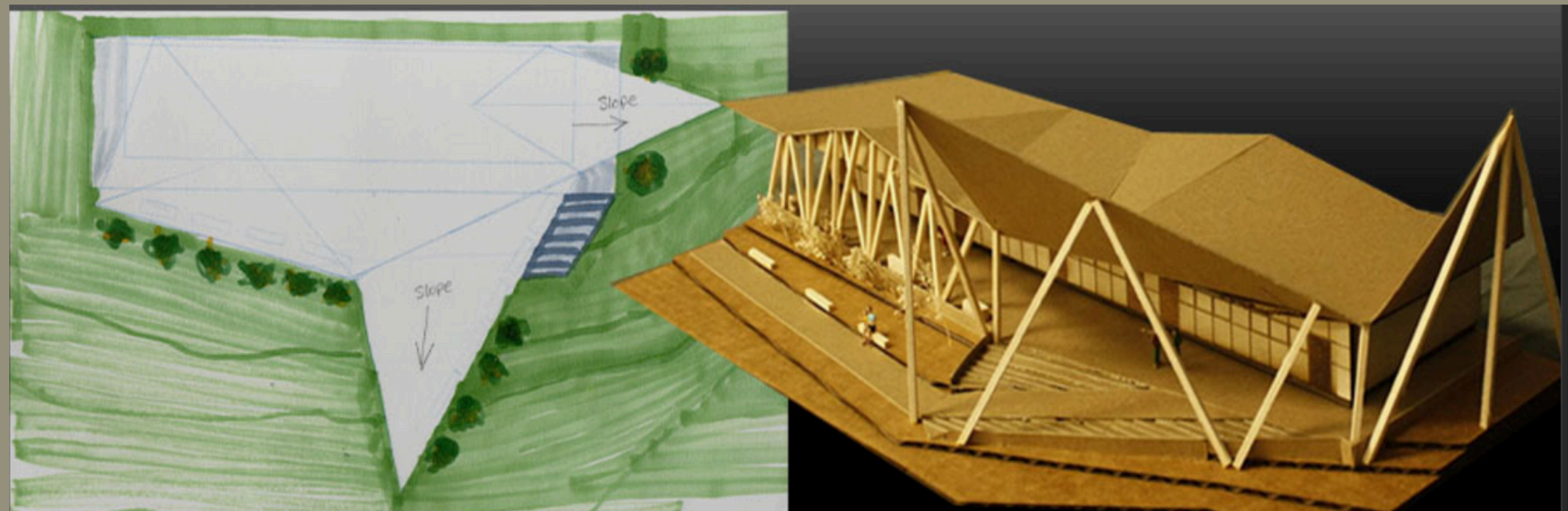
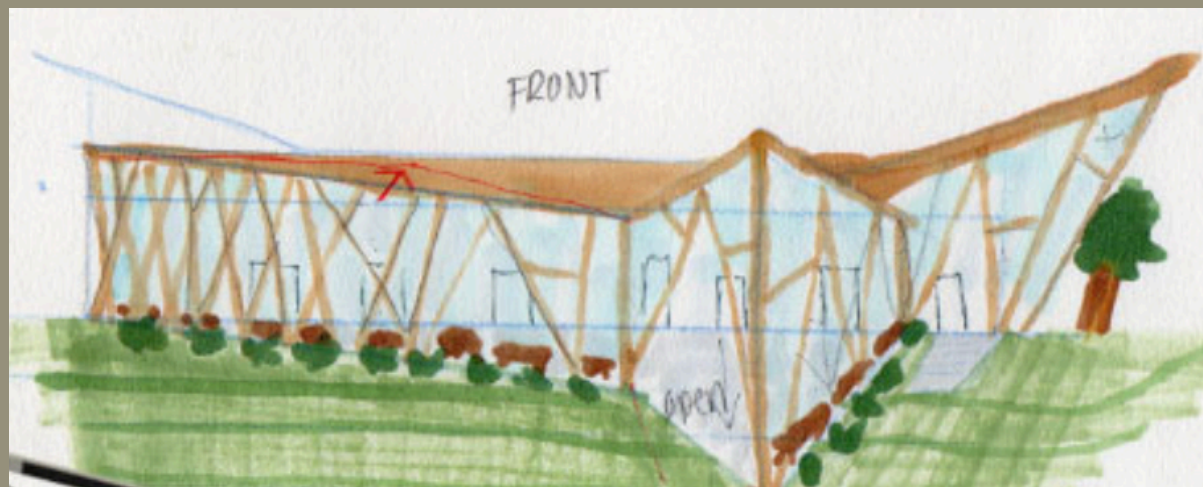
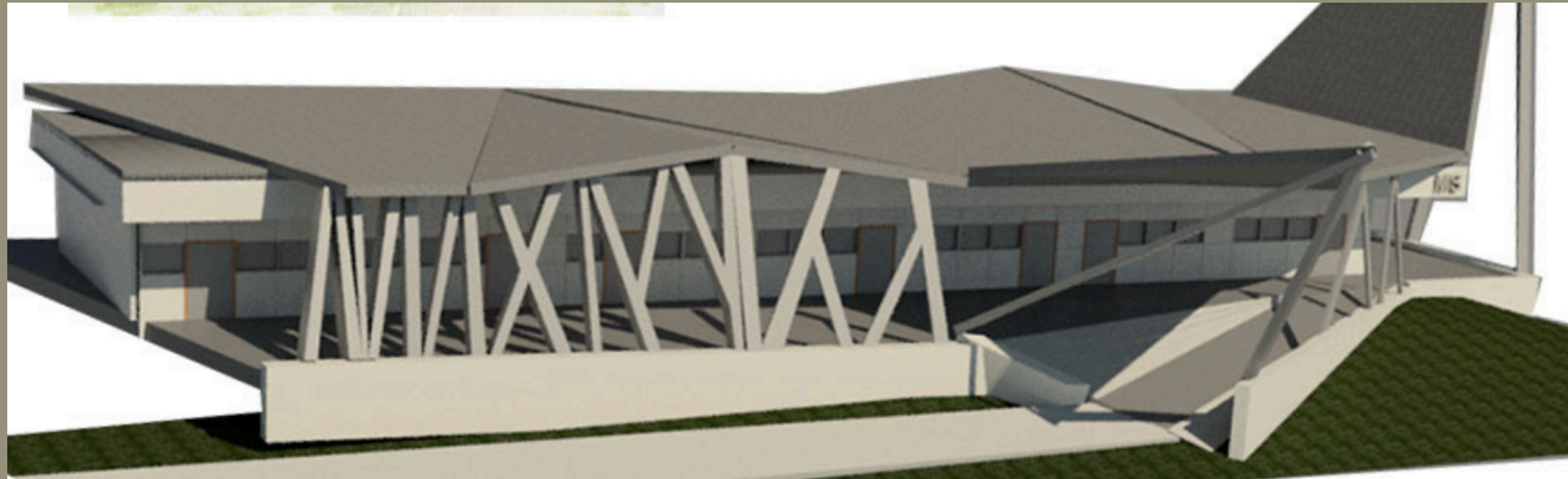


Ana Santiago

Math and Science Building

AUTOCAD | ARCH STUDIO

This intervention takes the existing Bakersfield College structure and transforms its front into a shaded, open campus terrace using a folded roof canopy and exposed triangular framing to create an iconic public gathering edge.



24 Plaza – Neighborhood Retail Courtyard

A compact retail plaza organized around a central parking court with strong pedestrian edges, bike access, and landscape buffers. The design balances storefront visibility, simple massing, and sustainable site features (green walls + clean-air/EV parking) while meeting accessibility and circulation requirements.



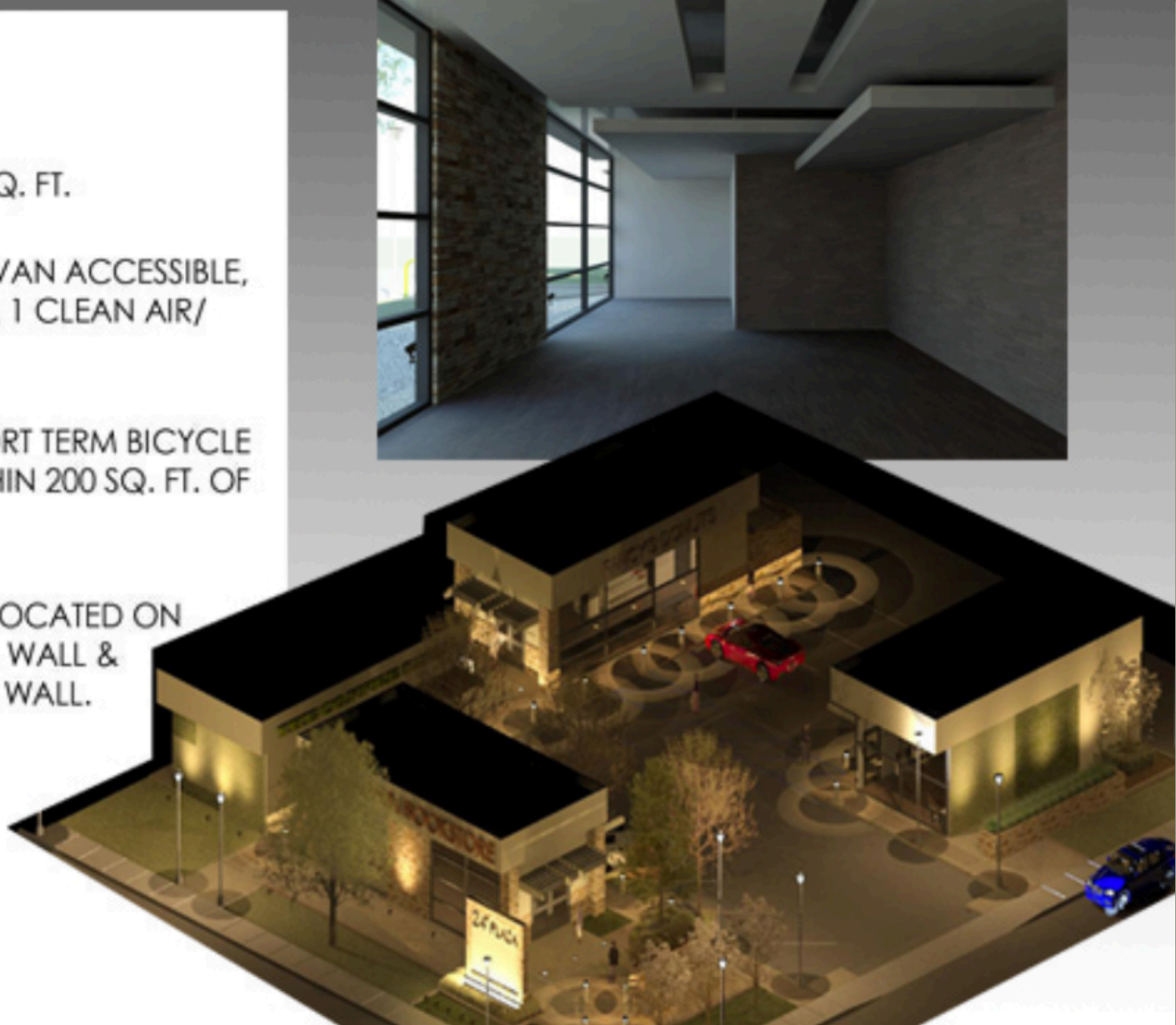
SITE ANALYSIS

-4 UNITS @ 800 SQ. FT.

-16 PARKING: 1 VAN ACCESSIBLE, 1 ACCESSIBLE, & 1 CLEAN AIR/ VAN POOL/EV.

-ADEQUATE SHORT TERM BICYCLE PARKING WITHIN 200 SQ. FT. OF ALL BLDGS.

-GREEN WALLS LOCATED ON BARBERSHOP W. WALL & COFFEESHOP N. WALL.

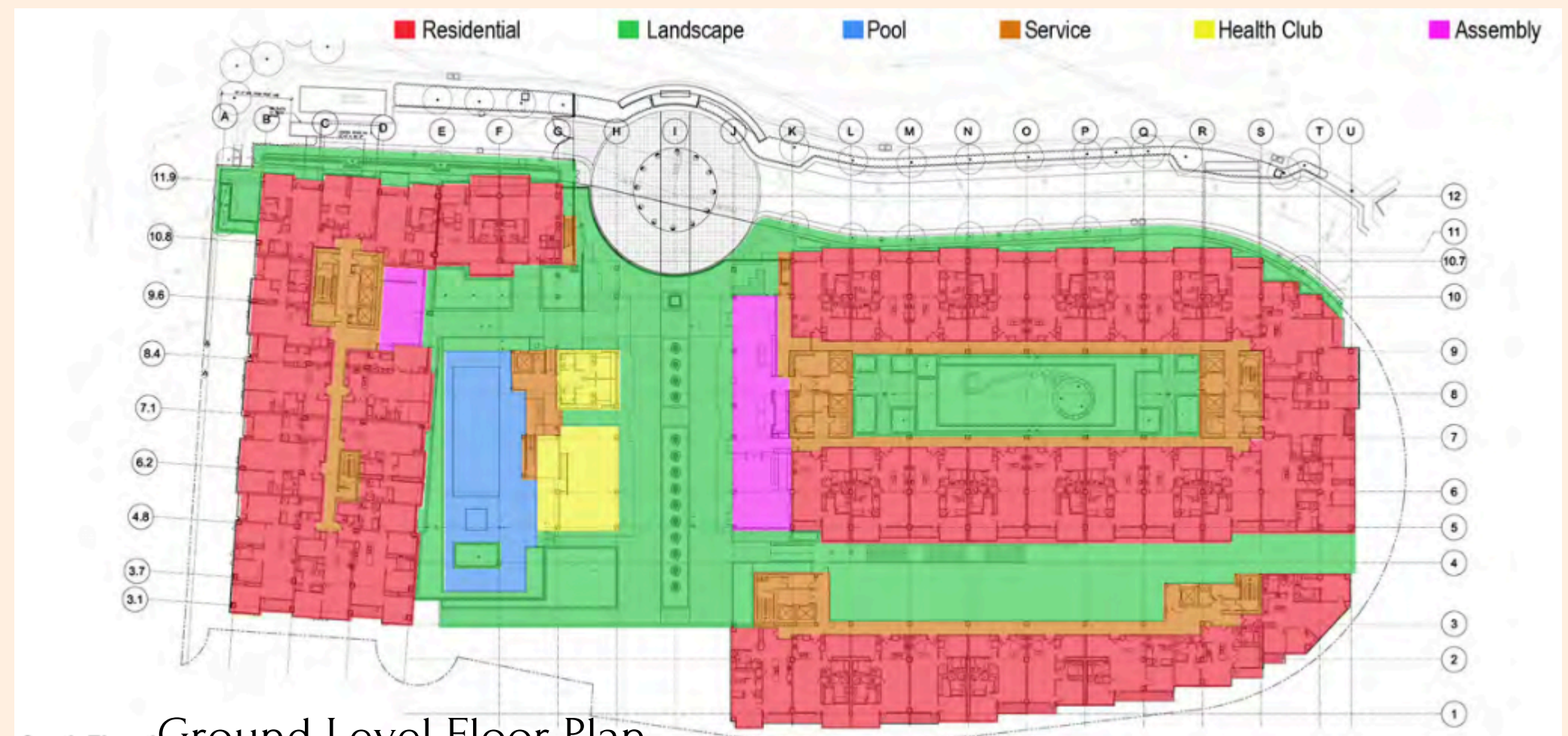


Bay Housing + Amenity Courtyard

A multi-building housing community designed for a challenging sloped site. The proposal organizes residential bars around a central landscaped courtyard anchored by shared amenities (pool, health club, assembly), with service placed at the perimeter and a clear phasing plan that allows the project to function in stages.



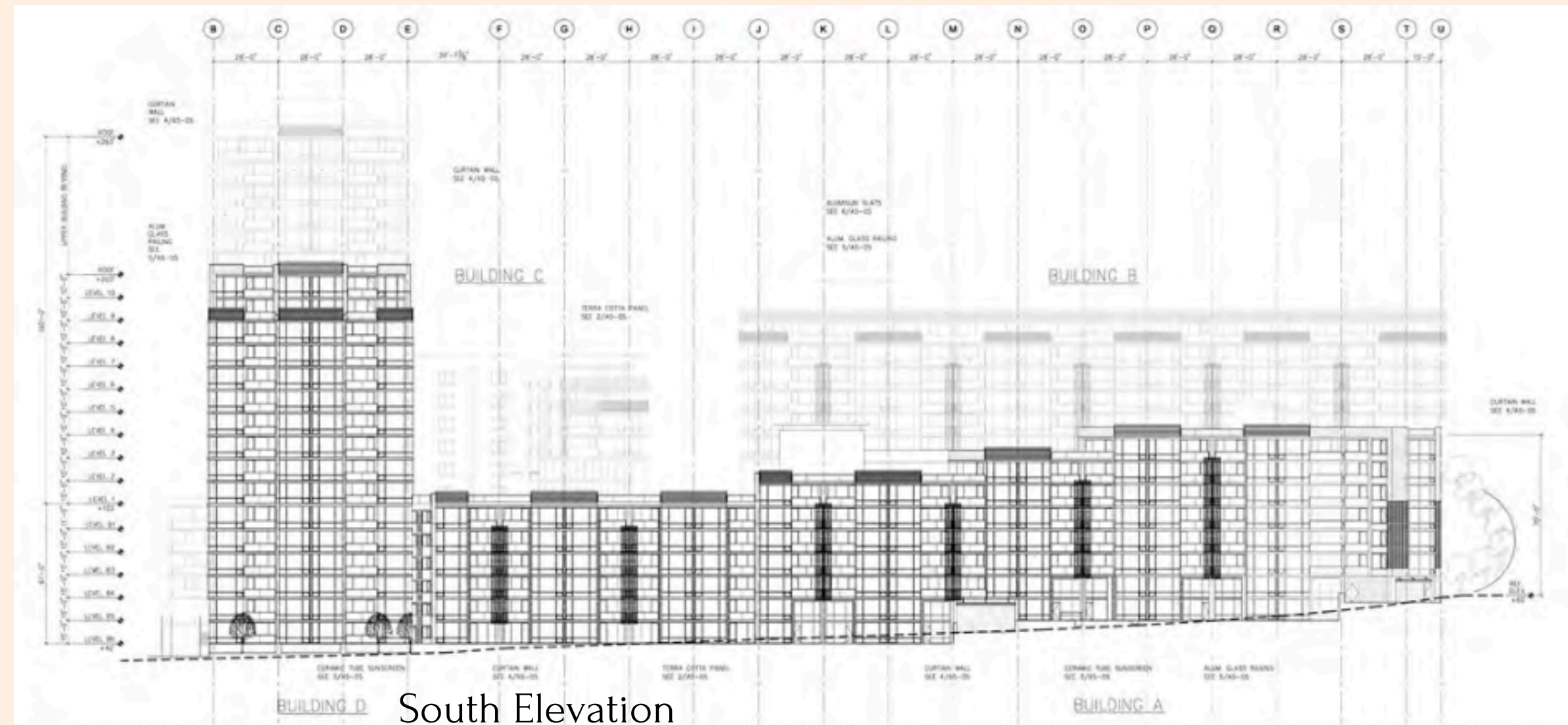
Rendered Perspective (Revit / Photoshop)



Ground Level Floor Plan



Site Plan



South Elevation

ANA SANTIAGO

Irving, TX 75039 | C: (661) 599-2209

Ana.Santiago23@outlook.com

Experience:

Construction Project Coordinator Premier Stair and Door- 2933 Eisenhower Street, Suite 130, Carrollton, TX 75007

June 2022 – Aug 2024

- Coordinated stair and door projects from order through installation.
- Prepared pull sheets, takeoffs, and installation packets. · Scheduled deliveries and coordinated field teams and builders.
- Maintained documentation and resolved field issues.

HVAC Admin Coordinator Reliant Air Conditioning- 3250 Story Rd W #106, Irving, TX 75038

April 2020 – June 2022

- Coordinated HVAC installations and technician schedules for residential projects.
- Interpreted construction plans and ensured compliance with building codes and permits.
- Managed equipment orders, customer financing forms, warranties, and service communication.
- Maintained inventory records and supported administrative operations.
- Trained staff on procedures and best practices.

Construction Administrator TETER – Architects + Engineers - 1200 Discovery Dr #160, Bakersfield, CA 93309

Aug 2017 – Dec 2019

- Assisted with RFIs, Submittals, ASIs, CCDs, COs, and bidding docs.
- Reviewed shop drawings, schedules, pay apps, and testing reports.
- Supported field observations and coordinated with contractors.

Project Coordinator/ Architectural Drafter TETER – Architects + Engineers - 1200 Discovery Dr #160, Bakersfield, CA 93309

May 2016- Aug 2017

- Drafted construction documents; coordinated sheets across disciplines.
- Assisted with DSA submittals and project closeout